

WHAT IS THE DIRECT ENVIRONMENTAL IMPACT OF BNP PARIBAS?

For more than eleven years, the Group and its teams have been committed to reducing the environmental impact of BNP Paribas within its operational scope. Take a look at some of the key figures from the **2023 assessment!**

OPERATIONAL PERIMETER =

BUILDING OPERATIONS



BUSINESS TRAVEL

GROUP GREENHOUSE GAS EMISSIONS:

285 323 teq CO²

Which is 1.56 teq CO² per FTE ("Full Time Equivalent", 1FTE being equivalent to a full-time workload), a reduction of more than 50% over eleven years! This equates to less emissions than a Paris-New York return flight (1.75 teq CO²).

WASTE GENERATION:

15 260 tonnes

Which is 84 kg by FTE. 7 times less than the amount produced personally by a person living in France.



BUSINESS TRIPS BY PLANE, TRAIN OR CAR:

528 M km

Which is around 3,000 km by FTE.



ENERGY CONSUMPTION OF BUILDINGS:

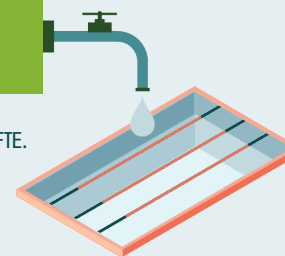
830 GWh

= energy consumption of 131,000 European households

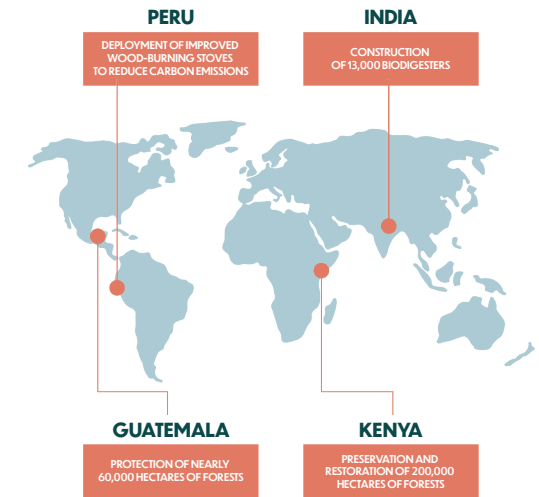
WATER CONSUMED:

1 897 531 m³

It's equivalent to around 760 Olympic swimming pools, which is 10.39 m³ by FTE.



As it has done each year since 2017, in 2023, BNP Paribas bought voluntary carbon credits equivalent to the previous year's residual emissions



THE GROUP'S COMMITMENTS TO REDUCE ITS CARBON FOOTPRINT ARE FULLY PART OF BNP PARIBAS' TRANSVERSAL "GREEN COMPANY FOR EMPLOYEES" PROGRAMME.

