

WHAT IS THE DIRECT ENVIRONMENTAL IMPACT OF BNP PARIBAS?

Year after year, the Group and its teams have been committed to reducing the environmental impact of BNP Paribas within its operational scope. Take a look at some of the key figures from the **2024 assessment!**

OPERATIONAL PERIMETER =

BUILDING OPERATIONS



BUSINESS TRAVEL

GROUP GREENHOUSE GAS EMISSIONS:

263 674 t_{eq} CO₂

which is 1.48 t_{eq} CO₂ by FTE ("Full Time Equivalent", 1 FTE being equivalent to a full-time workload), a reduction of more than 50% over thirteen years and of 7.5% vs 2023!

WASTE GENERATION:

10 915 tonnes

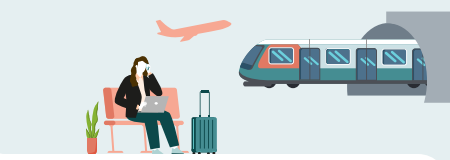
of which are 48.6% are recycled waste
- 28.5% vs 2023.



BUSINESS TRIPS BY PLANE, TRAIN OR CAR:

498 Million of km

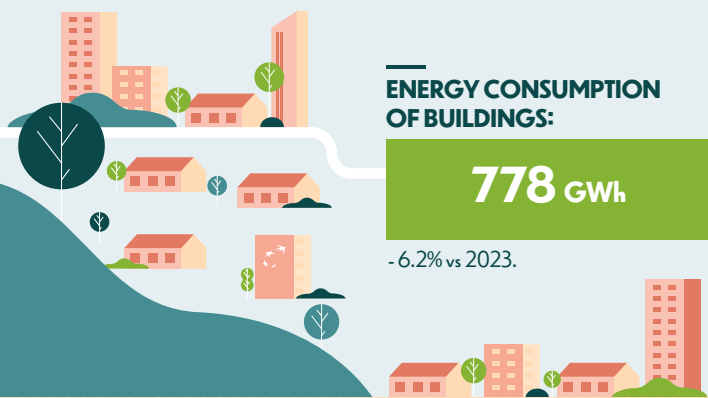
- 5.7% vs 2023.



ENERGY CONSUMPTION OF BUILDINGS:

778 GWh

- 6.2% vs 2023.



PAPER CONSUMED:

6 017 tonnes

of which 87.7% are sustainable paper
- 15.8% vs 2023.



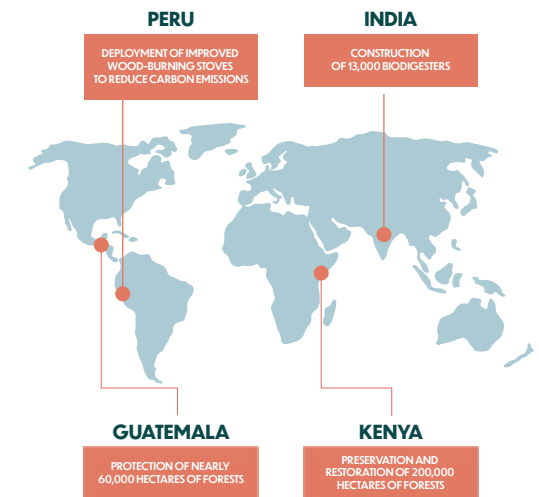
WATER CONSUMED:

1 606 667 m³

- 15.3% vs 2023.



As it has done each year since 2017, BNP Paribas bought voluntary carbon credits equivalent to the previous year's residual emissions



THE GROUP'S COMMITMENTS TO REDUCE ITS CARBON FOOTPRINT ARE FULLY PART OF BNP PARIBAS' TRANSVERSAL "GREEN COMPANY FOR EMPLOYEES" PROGRAMME.



BNP PARIBAS

The bank for a changing world